

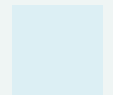
Aluminium



3000°K



4000°K



5700°K

LED Pendelleuchten

2.400 lm - 16.200 lm

LED Leuchtserie ‚TS‘ für die abgehängte Montage.

Gehäuse:

- Gehäuse aus Aluminium eloxal

Varianten:

- ‚TS‘ - Schienensystem als Lichtband konfigurierbar
- ‚TS Solo‘ - Einzelleuchte

Erhältliche Längen ‚TS‘:

- 1.422mm
- 2.844mm

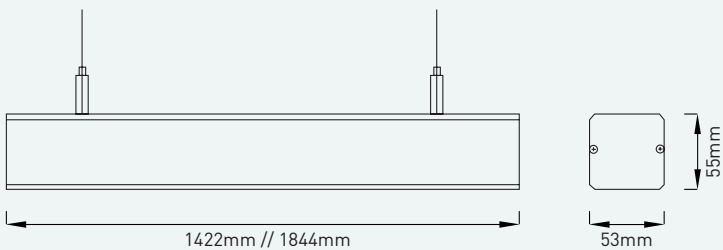
Erhältliche Längen ‚TS Solo‘:

- 576mm
- 858mm
- 1.140mm
- 1.422mm

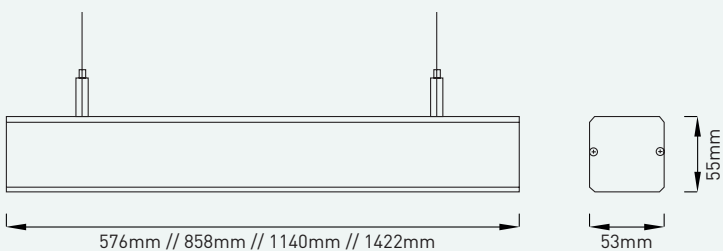
Seilabhängung:

- transparente Seilabhängung 2m

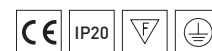
TS:



TS Solo:

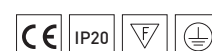


Schiene ,TS‘



Artikelnummer ZLED-	Abmessungen LxBxH	Ausführung	Gewicht
100TSA0001400	1.422 x 53 x 55 mm	Aluminium	1,6kg
100TSA0002850	2.844 x 53 x 55 mm	Aluminium	2,8kg

Lichteinsatz ,TS‘



Artikelnummer ZLED-	Länge	Ausführung	Lichtfarbe Kelvin	Lumen LED	Leistung	Gewicht
TS - nicht dimmbar						
100TSL300❖212#	1.422 mm	Asymmetrisch		3.500 lm	21,0 W	1,25 kg
100TSL350❖212#		35°	# = W = 3000°K			
100TSL600❖212#		60°	# = N = 4000°K			
100TSL900❖212#		90°	# = D = 5700°K			
100TSL300❖362#	1.422 mm	Asymmetrisch		5.800 lm	36,0 W	1,25 kg
100TSL350❖362#		35°	# = W = 3000°K			
100TSL600❖362#		60°	# = N = 4000°K			
100TSL900❖362#		90°	# = D = 5700°K			
100TSL300❖532#	1.422 mm	Asymmetrisch		8.100 lm	53,0 W	1,25 kg
100TSL350❖532#		35°	# = W = 3000°K			
100TSL600❖532#		60°	# = N = 4000°K			
100TSL900❖532#		90°	# = D = 5700°K			

❖: 5 = 5-Linien Verdrahtung, 7 = 7-Linien Verdrahtung, 9 = 9-Linien Verdrahtung

Sonstiges:

- Hohe Lebensdauer: 80.000 Stunden (gemäß L80B50)

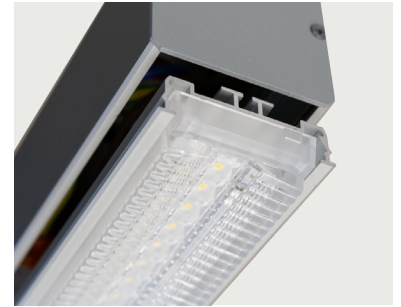




Artikelnummer ZLED-	Länge	Ausführung	Lichtfarbe Kelvin	Lumen LED	Leistung	Gewicht
TS - DALI dimmbar						
100TSL300❖219#	1.422 mm	Asymmetrisch		3.500 lm	21,0 W	1,25 kg
100TSL350❖219#		35°	# = W = 3000°K			
100TSL600❖219#		60°	# = N = 4000°K			
100TSL900❖219#		90°	# = D = 5700°K			
100TSL300❖369#	1.422 mm	Asymmetrisch		5.800 lm	36,0 W	1,25 kg
100TSL350❖369#		35°	# = W = 3000°K			
100TSL600❖369#		60°	# = N = 4000°K			
100TSL900❖369#		90°	# = D = 5700°K			
100TSL300❖539#	1.422 mm	Asymmetrisch		8.100 lm	53,0 W	1,25 kg
100TSL350❖539#		35°	# = W = 3000°K			
100TSL600❖539#		60°	# = N = 4000°K			
100TSL900❖539#		90°	# = D = 5700°K			

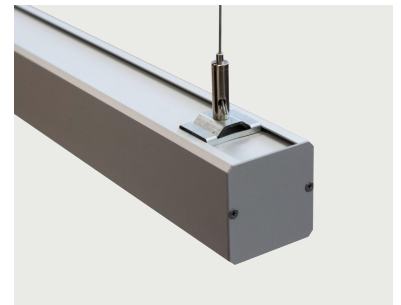
❖: 5 = 5-Linien Verdrahtung, 7 = 7-Linien Verdrahtung, 9 = 9-Linien Verdrahtung

Lichteinsatz ,TS'



Artikelnummer ZLED-	Bezeichnung
	Längsverbinder
	Abhänger
	Einspeiser
	Anschlussklemme

Zubehör ,TS'



Sonstiges:

- Hohe Lebensdauer: 80.000 Stunden (gemäß L80B50)



TS Solo



Artikelnummer ZLED-	Länge	Ausführung	Lichtfarbe Kelvin	Lumen LED	Leistung	Gewicht
TS Solo - nicht dimmbar						
100TSS300602#	576 mm	Asymmetrisch		2.400 lm	15,0 W	1,2 kg
100TSS350602#		35°	# = W = 3000°K			
100TSS600602#		60°	# = N = 4000°K			
100TSS900602#		90°	# = D = 5700°K			
100TSS300852#	858 mm	Asymmetrisch		3.400 lm	21,0 W	1,9 kg
100TSS350852#		35°	# = W = 3000°K			
100TSS600852#		60°	# = N = 4000°K			
100TSS900852#		90°	# = D = 5700°K			
100TSS301102#	1.140 mm	Asymmetrisch		4.300 lm	27,0 W	2,1 kg
100TSS351102#		35°	# = W = 3000°K			
100TSS601102#		60°	# = N = 4000°K			
100TSS901102#		90°	# = D = 5700°K			
100TSS301402#	1.422 mm	Asymmetrisch		8.100 lm	53,0 W	2,4 kg
100TSS351402#		35°	# = W = 3000°K			
100TSS601402#		60°	# = N = 4000°K			
100TSS901402#		90°	# = D = 5700°K			
TS Solo - DALI dimmbar						
100TSS300609#	576 mm	Asymmetrisch		2.400 lm	15,0 W	1,2 kg
100TSS350609#		35°	# = W = 3000°K			
100TSS600609#		60°	# = N = 4000°K			
100TSS900609#		90°	# = D = 5700°K			
100TSS300859#	858 mm	Asymmetrisch		3.400 lm	21,0 W	1,9 kg
100TSS350859#		35°	# = W = 3000°K			
100TSS600859#		60°	# = N = 4000°K			
100TSS900859#		90°	# = D = 5700°K			
100TSS301109#	1.140 mm	Asymmetrisch		4.300 lm	27,0 W	2,1 kg
100TSS351109#		35°	# = W = 3000°K			
100TSS601109#		60°	# = N = 4000°K			
100TSS901109#		90°	# = D = 5700°K			
100TSS301409#	1.422 mm	Asymmetrisch		8.100 lm	53,0 W	2,4 kg
100TSS351409#		35°	# = W = 3000°K			
100TSS601409#		60°	# = N = 4000°K			
100TSS901409#		90°	# = D = 5700°K			

Sonstiges:

- Hohe Lebensdauer: 80.000 Stunden (gemäß L80B50)

